

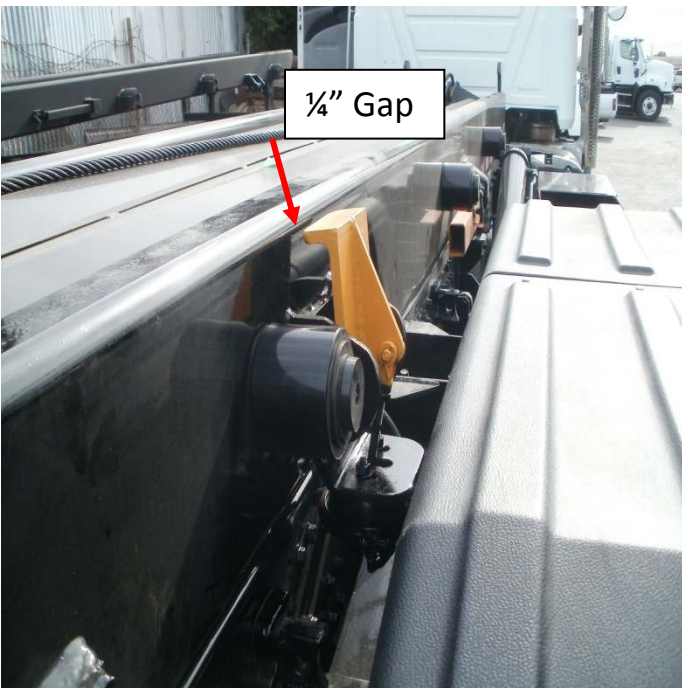
Air Bin Locks Installation Instructions



Bin locks are normally installed between 2nd and 3rd roller



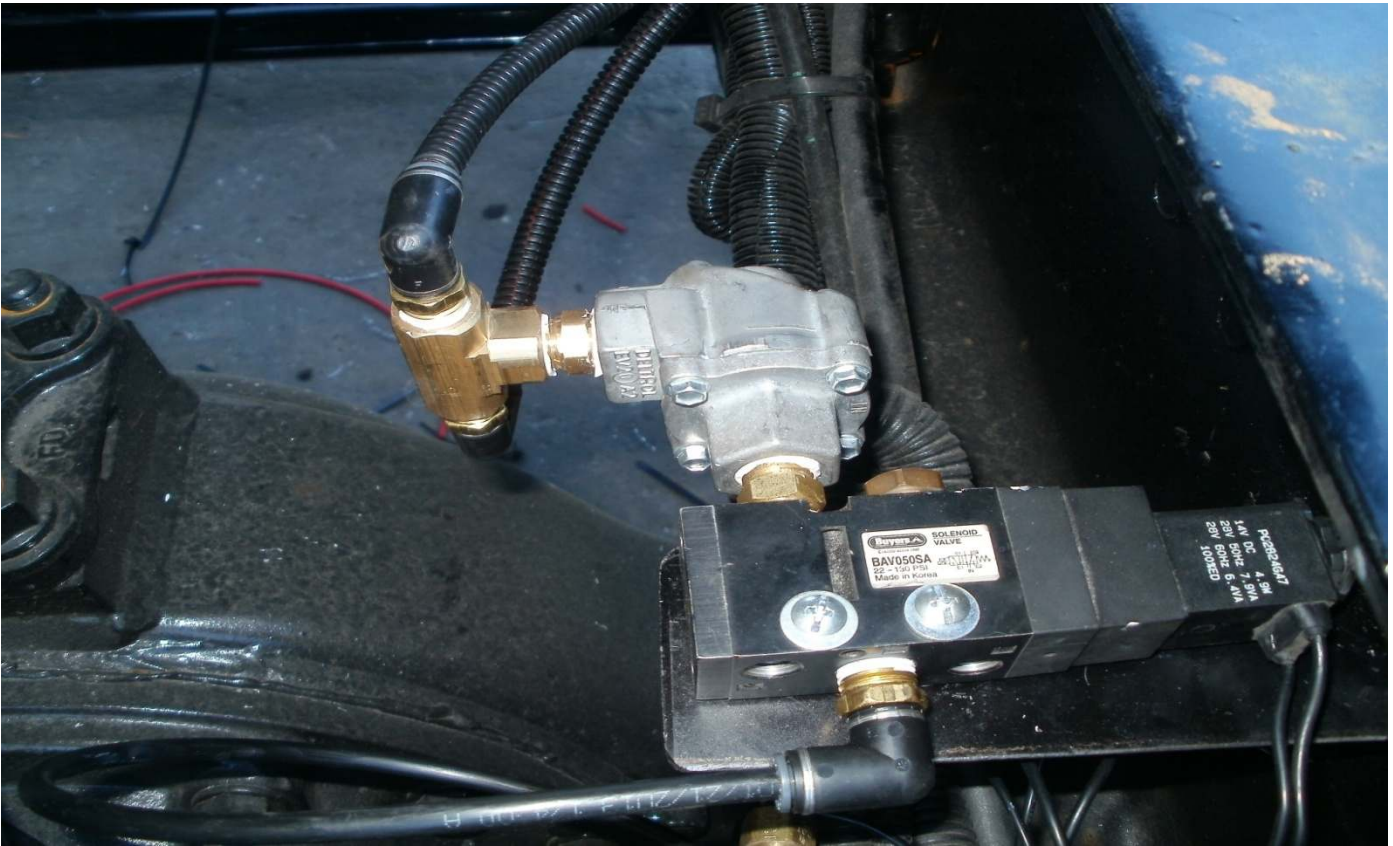
Make sure bin locks clear fenders when rail is in the down position with bin locks open



Bin lock hook in the closed position should be about 1/4" away from touching rail.



Mount air solenoid valve on inside of truck Frame protected from falling debris.



Depending on the distance where bin locks are installed it may require to drill a $\frac{3}{4}$ " hole on the exterior of the rail next to bin locks a to run the air lines through inside of rail and come out near the rear hinge through another $\frac{3}{4}$ " hole drilled on the interior of rails.

